

EN

AXIAL FAN
User's manual

www.ventilation-system.com



Quiet



CONTENTS

Delivery set	6
Brief description	6
Fan options.....	6
Operation guidelines	7
Designation key.....	7
Installation	8
Fan setup.....	8
Technical maintenance.....	10
Storage and transportation regulations	10
Manufacturer's warranty	11

This user's manual is a main operating document, intended for technical, maintenance, and operating staff.

The manual contains information about the purpose, technical details, operating principle, design, and installation of the Quiet unit and all of its modifications.

Technical and maintenance staff must have theoretical and practical training in the field of ventilation systems and should be able to work in accordance with workplace safety rules as well as construction norms and standards applicable in the territory of the country.

The information in this user's manual was correct at the time of the document's preparation.

The Company reserves the right to modify the technical characteristics, design, or configuration of its products at any time in order to incorporate the latest technological developments.

No part of this publication may be reproduced, stored in a retrieval system, or transmitted, in any form or by any means in any information search system or translated into any language in any form without the prior written permission of the Company.



**READ THE USER'S MANUAL CAREFULLY BEFORE PROCEEDING WITH INSTALLATION WORKS.
COMPLIANCE WITH THE MANUAL REQUIREMENTS ENSURES RELIABLE OPERATION AND LONG
SERVICE LIFE OF THE UNIT.
KEEP THE USER'S MANUAL AVAILABLE AS LONG AS YOU USE THE UNIT. YOU MAY NEED TO RE-
READ THE INFORMATION ON THE PRODUCT SERVICING.**



FOLLOW THE USER'S MANUAL REQUIREMENTS TO ENSURE DURABLE AND TROUBLE-FREE OPERATION OF THE UNIT.

Disconnect the unit from power supply prior to any connection, servicing, maintenance, and repair operations.

Only qualified electricians with a work permit for electrical units up to 1000 V are allowed for installation and maintenance. The present user's manual should be carefully read before beginning works.

- Single-phase power mains must comply with the acting local electrical norms and standards.
- Fixed electrical wiring must be equipped with an automatic circuit breaker.
- The unit must be connected to power mains through a QF automatic circuit breaker integrated into the fixed wiring system. The gap between the circuit breaker contacts on all poles must be not less than 3 mm. Check the unit for any visible damages of the impeller and the casing before starting installation. The casing internals must be free of any foreign objects that can damage the impeller blades.
- While mounting the unit, avoid compression of the casing! Deformation of the casing may result in the motor jam and noisy operation. Misuse of the unit and any unauthorised modifications are not allowed.
- Take steps to prevent ingress of smoke, carbon monoxide, and other combustion products into the room through open chimney flues or other fire-protection devices. Sufficient air supply must be provided for proper combustion and exhaust of gases through the chimney of fuel burning equipment to prevent back drafting. Transported air must not contain any dust or other solid

impurities, sticky substances, or fibrous materials.

- Do not use the unit in a hazardous or explosive environment containing spirits, gasoline, insecticides, etc.
- Do not close or block the intake or extract vents in order to ensure the efficient air flow.
- Do not sit on the unit and do not put objects on it.
- The unit is allowed to be used by children aged from 8 years old and above and persons with reduced physical, sensory, or mental capabilities or no experience and knowledge provided that they have been given supervision or instruction regarding safe use of the unit and understand the risks involved.
- Do not allow children to play with the unit.



**THE PRODUCT MUST BE DISPOSED SEPARATELY AT THE END OF ITS SERVICE LIFE.
DO NOT DISPOSE THE UNIT AS UNSORTED MUNICIPAL WASTE.**

DELIVERY SET

Fan	— 1 pcs.
Screws and dowels	— 4 pcs.
Plastic screwdriver (only for the models with a timer)	— 1 pcs.
User's manual	— 1 pcs.
Packing box	— 1 pcs.

BRIEF DESCRIPTION

The unit described herein is an axial fan for exhaust ventilation of small to medium-sized premises heated during winter. The fan is designed for connection to \varnothing 100 and 125 mm air ducts. The \varnothing 100 and 125 mm fans are equipped with a single-speed motor. The fan is equipped with a back valve that prevents air back drafting when the fan is off.

FAN OPTIONS

Quiet V

The fan is turned on and off with a built-in pull cord switch.

Quiet T

After the fan is turned off with a switch, for example, a light switch, the fan keeps operating for a set turn-off delay time period, adjustable from 2 to 30 minutes.

Quiet T1

After the fan is turned on with a switch, for example, a light switch, the fan is activated in a set turn-on delay time period, adjustable from 0 to 2 minutes. After the switch is turned off the fan keeps operating for a set turn-off delay time period, adjustable from 2 to 30 minutes.

Quiet TH

The fan is turned on as the indoor humidity exceeds set level, adjustable from 60 % up to 90 %.

As the indoor humidity level drops down below the set point, the fan keeps operating for a set turn-off delay time period, adjustable from 2 to 30 minutes. After the switch is turned off the fan keeps operating for a set turn-off delay time period, adjustable from 2 to 30 minutes.

Quiet TP

Upon activation of the motion sensor the fan is turned on. The motion sensor has a detection range of up to 1-4 m and viewing angle up to 100°. After no more motion is detected the fan keeps operating for a set turn-off delay time period, adjustable from 2 to 30 minutes.

OPERATION GUIDELINES

The fan is rated for connection to single-phase AC 220...240 V / 50 Hz power mains. Air motion direction in the system must match the pointer on the fan casing. Hazardous parts access and water ingress protection rating is IP34.

The fan is rated for operation at the ambient temperature ranging from +1 °C up to +45 °C.

The unit is rated as a Class II electrical appliance.

DESIGNATION KEY

100 Quiet X X A

Colour :

_ — white

Mains parameters

Additional options:

V — pull cord switch

T — turn-off delay timer

T1 — turn-on delay timer

TH — humidity sensor and turn-off delay timer

TP — motion sensor

Outlet duct diameter [mm]

INSTALLATION

The fan is designed for wall or ceiling mounting with direct air exhaust to the ventilation shaft or into the round air duct of matching diameter (Fig. 2). Fan installation with direct air discharge upwards is not allowed (Fig. 2).

Step 1. Cut off power supply and make sure electricity has been turned off (Fig. 3).

Step 2. Lead the power cable to the ventilation hole (Fig.4).

Step 3. Remove the front panel from the fan. Then remove the circuit board cover (Fig. 5).

Step 4. Mark and drill holes for mounting the fan and then install the fan (Fig. 6-8).

Step 5. Connect the fan to power mains according to the wiring diagram (Fig. 12-14).

Step 6. Cover the casing with a front panel (Fig. 9) and a decorative panel (Fig. 10).

Step 7. Supply power voltage to the fan (Fig. 11).

TERMINAL DESIGNATIONS ON WIRING DIAGRAMS

L — phase

N — 0


S — external switch


QF — automatic circuit breaker


FAN SETUP



**THE TIMER CIRCUIT IS LIVE.
MAKE SURE THE FAN IS DISCONNECTED FROM POWER SUPPLY.**

 **T_{on}**— To adjust the fan turn-on delay time, turn the control knob **T_{on}** clockwise to increase and counter-clockwise to decrease the turn-on delay time respectively, adjustable from 0 up to 2 minutes.

 **T_{off}**— To adjust the fan turn-off delay time, turn the control knob **T_{off}** clockwise to increase and counter-clockwise to decrease the turn-off delay time respectively, adjustable from 2 up to 30 minutes.

 **H**— To adjust the humidity set point turn the control knob **H** clockwise to increase and counter-clockwise to decrease the humidity sensor set point, adjustable from 60 % up to 90 %.

The fan delivery set includes a specially designed plastic screwdriver for fan settings adjustments. Use it to change the turn-on and turn-off delay time and the humidity set point.



DO NOT USE A METAL SCREWDRIVER, KNIFE, ETC. FOR ADJUSTMENT OPERATIONS NOT TO DAMAGE THE CIRCUIT BOARD.

TECHNICAL MAINTENANCE

The fan maintenance periodicity is at least once per 6 months.

Maintenance steps:

- Disconnect the fan from power supply and make sure electricity has been turned off (Fig. 15).
- Remove the front and the decorative panels, wipe the fan with a dry cloth or a brush (Fig. 16).
- Clean the front panel under running water (Fig. 17).
- Wipe the fan surfaces dry.
- Cover the fan with the front panel.
- Connect power supply to the fan (Fig. 18).

WARNING! Do not allow water or liquid come into contact with electric components!

STORAGE AND TRANSPORTATION REGULATIONS

- Store the unit in the manufacturer's original packaging box in a dry closed ventilated premise with temperature range from +5 °C up to +40 °C and relative humidity up to 70 %.
- Storage environment must not contain aggressive vapours and chemical mixtures provoking corrosion, insulation, and sealing deformation.
- Use suitable hoist machinery for handling and storage operations to prevent possible damage to the unit.
- Follow the handling requirements applicable for the particular type of cargo.
- The unit can be carried in the original packaging by any mode of transport provided proper protection against precipitation and mechanical damage. The unit must be transported only in the working position.
- Avoid sharp blows, scratches, or rough handling during loading and unloading.
- Prior to the initial power-up after transportation at low temperatures allow the unit to warm up at room temperature for at least 3-4 hours.

MANUFACTURER'S WARRANTY

The product is in compliance with EU norms and standards on low voltage guidelines and electromagnetic compatibility. We hereby declare that the product complies with the provisions of Electromagnetic Council Directive 2014/30/EU, Low Voltage Directive 2014/35/EU and CE-marking Directive 93/68/EEC. This certificate is issued following test carried out on samples of the product referred to above.

The manufacturer hereby warrants normal operation of the unit for 60 months after the retail sale date provided the user's observance of the transportation, storage, installation, and operation regulations. Should any malfunctions occur in the course of the unit operation through the Manufacturer's fault during the guaranteed period of operation, the user is entitled to get all the faults eliminated by the manufacturer by means of warranty repair at the factory free of charge. The warranty repair includes work specific to elimination of faults in the unit operation to ensure its intended use by the user within the guaranteed period of operation. The faults are eliminated by means of replacement or repair of the unit components or a specific part of such unit component.

The warranty repair does not include:

- routine technical maintenance
- unit installation/dismantling
- unit setup

To benefit from warranty repair, the user must provide the unit, the user's manual with the purchase date stamp, and the payment paperwork certifying the purchase. The unit model must comply with the one stated in the user's manual. Contact the Seller for warranty service.

The manufacturer's warranty does not apply to the following cases:

- User's failure to submit the unit with the entire delivery package as stated in the user's manual including submission with missing component parts previously dismantled by the user.
- Mismatch of the unit model and the brand name with the information stated on the unit packaging and in the user's manual.
- User's failure to ensure timely technical maintenance of the unit.
- External damage to the unit casing (excluding external modifications as required for installation) and internal components caused by the user.
- Redesign or engineering changes to the unit.

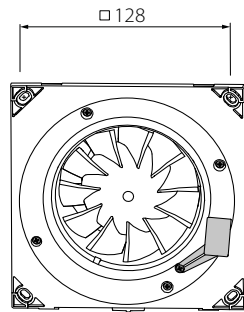
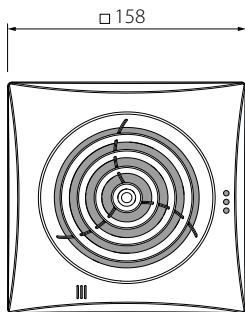
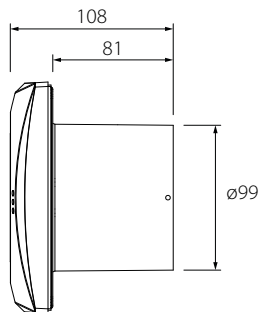
- Replacement and use of any assemblies, parts and components not approved by the manufacturer.
- Unit misuse.
- Violation of the unit installation regulations by the user.
- Violation of the unit control regulations by the user.
- Unit connection to power mains with a voltage different from the one stated in the user's manual.
- Unit breakdown due to voltage surges in power mains.
- Discretionary repair of the unit by the user.
- Unit repair by any persons without the manufacturer's authorization.
- Expiration of the unit warranty period.
- Violation of the unit transportation regulations by the user.
- Violation of the unit storage regulations by the user.
- Wrongful actions against the unit committed by third parties.
- Unit breakdown due to circumstances of insuperable force (fire, flood, earthquake, war, hostilities of any kind, blockades).
- Missing seals if provided by the user's manual.
- Failure to submit the user's manual with the unit purchase date stamp.
- Missing payment paperwork certifying the unit purchase.



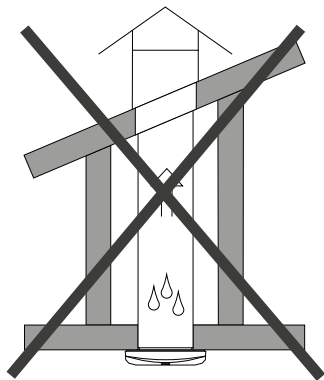
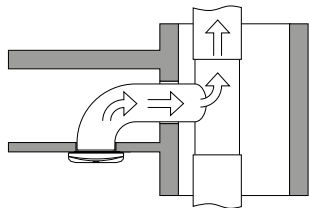
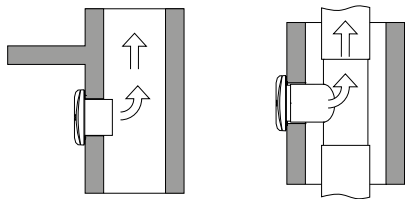
FOLLOWING THE REGULATIONS STIPULATED HEREIN WILL ENSURE A LONG AND TROUBLE-FREE OPERATION OF THE UNIT.



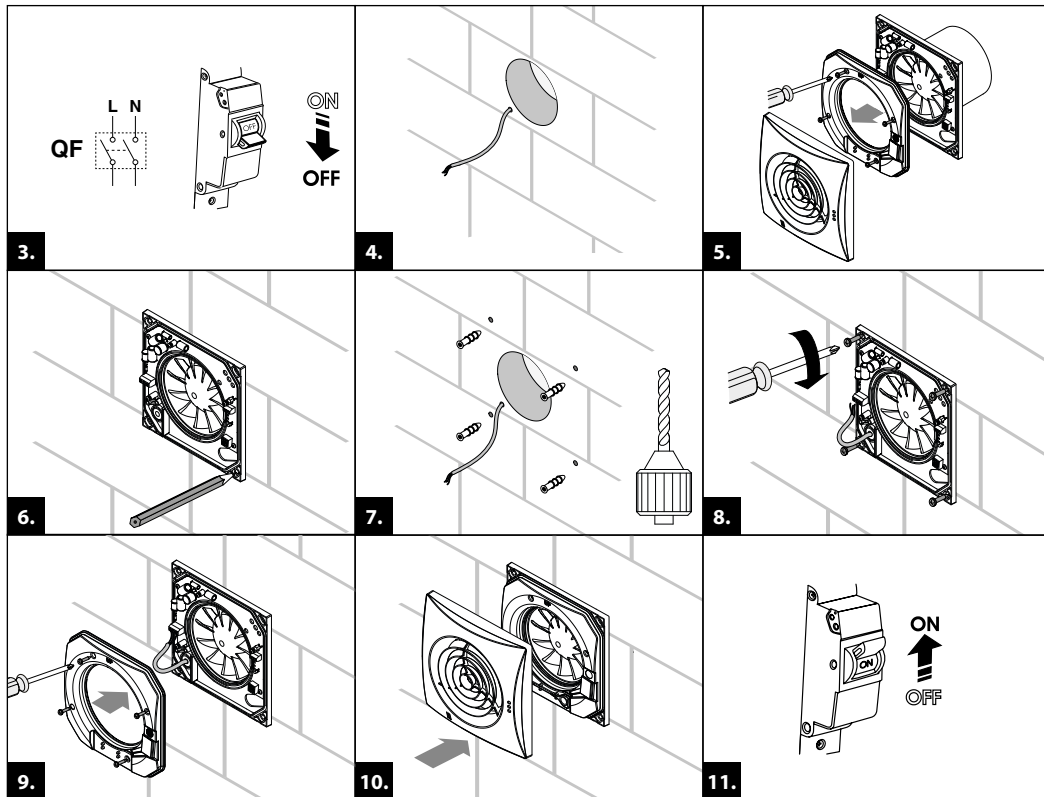
USER'S WARRANTY CLAIMS SHALL BE SUBJECT TO REVIEW ONLY UPON PRESENTATION OF THE UNIT, THE PAYMENT DOCUMENT AND THE USER'S MANUAL WITH THE PURCHASE DATE STAMP.



1.

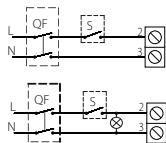


2.

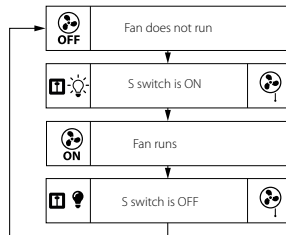


12.

100/125 Quiet

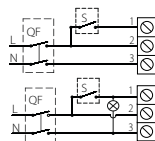


100/125 Quiet V

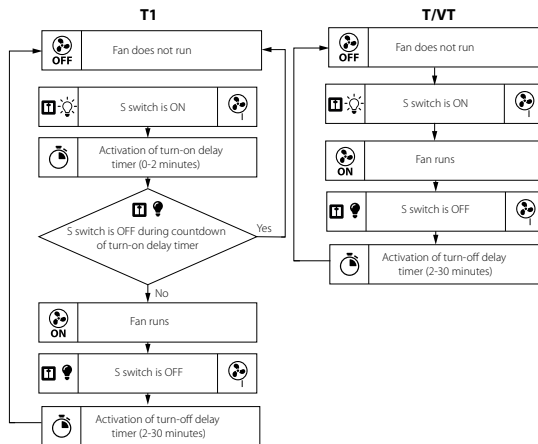
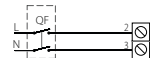


13.

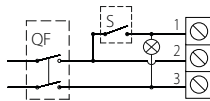
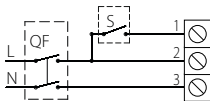
100/125 Quiet T/T1



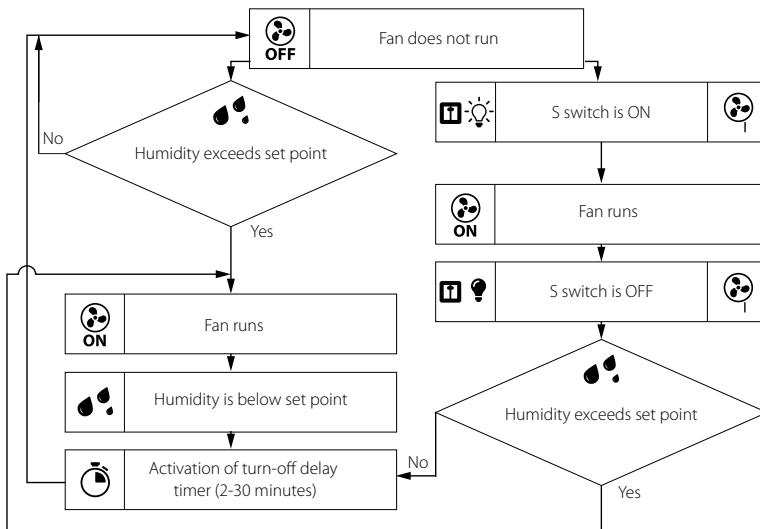
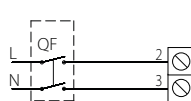
100/125 Quiet VT



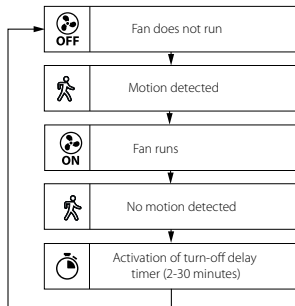
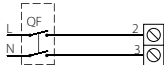
100/125 Quiet TH



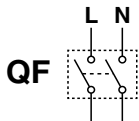
100/125 Quiet VTH



100/125 Quiet TP

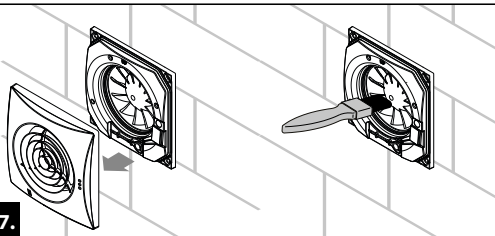


15.

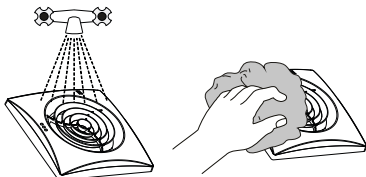


ON
↓
OFF

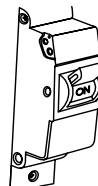
16.



17.



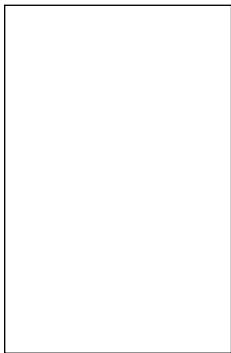
18.



ON
↑
OFF

19.

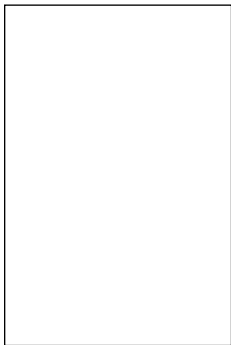
Quality Inspector's Stamp



Sold by
(name and stamp of the seller)



Manufacture Date



Purchase Date



Certificate of acceptance

V

T

Quiet T1

TH

TP

The fan is recognized as serviceable.



model
VENTS Quiet Duo

EN AXIAL FANS
user's manual

www.ventilation-system.com





WARNING

Follow the user's manual requirements to ensure durable and trouble-free operation of the fan.

Disconnect the fan from power supply prior to any connection, servicing and repair operations.

Only duly qualified electricians with valid electrical permit for electric operations at the units with operating voltage up to 1000 V are allowed for mounting and maintenance after careful study of the present user's manual.

The single-phase power mains must comply with the acting local electrical norms and standards.

The fixed electrical wiring must be equipped with an automatic circuit breaker.

The fan must be connected to power mains through an automatic circuit breaker QF integrated into the fixed wiring system with the gap between the breaker contacts on all poles not less than 3 mm. Check the fan for any visible damages of the impeller and the casing before starting installation.

The casing internals must be free of any foreign objects which can damage the impeller blades.

Due to constant improvements the design of some models may slightly differ from those ones described herein.

Follow the user's manual requirements to ensure durable and trouble-free operation of the fan.



WARNING

While mounting the fan do not compress the casing!

Deformation of the casing may result in the motor jam and noisy operation.

Misuse of the fan and any unauthorised modifications are not allowed.

Take steps to prevent ingress of smoke, carbon monoxide and other combustion products into the room through open chimney flues or other fire-protection devices.

Sufficient air supply must be provided for proper combustion and exhaust of gases through the chimney of fuel burning equipment to prevent back drafting.

Transported air must not contain any dust or other solid impurities, sticky substances or fibrous materials.



WARNING

Follow the user's manual requirements to ensure durable and trouble-free operation of the fan.

Do not use the fan in a hazardous or explosive environment containing spirits, gasoline, insecticides, etc.

Do not close or block the fan intake or extract vents in order to ensure the efficient stream.

Do not sit on the fan and do not put objects on it.
The timer circuit is live.

Disconnect the fan from power supply prior to any adjustment operations.

The fan delivery set includes a specially designed plastic screwdriver for adjustment of the fan parameters.

Use the plastic screwdriver to change the turn-off delay time.

Follow the user's manual requirements to ensure durable and trouble-free operation of the fan.



WARNING

The product is allowed to be used by children aged from 8 years and above and persons with reduced physical, sensory or mental capabilities or lack of experience and knowledge provided that they have been given supervision or instruction regarding a safe use of the product and understand the risks involved.

Do not allow children play with the product.

Fan cleaning and maintenance must only be performed by children under adult supervision.



The product must be collected separately at the end of service life.

Do not dispose of as unsorted municipal waste.



**Read the user's manual carefully before proceeding with installation works.
Compliance with the manual requirements ensures reliable operation and long
service life of the product.
Keep the user's manual available as long as you use the product.
You may need to re-read the information on the product servicing.**

DELIVERY SET

1. Fan - 1 item
2. Screws and dowels - 4 items
3. Plastic screwdriver (only for the models with a timer) - 1 item
4. User's manual - 1 item
5. Packing box

BRIEF DESCRIPTION

The products is an axial fan for exhaust ventilation of small to medium-sized premises.

The fan is designed for connection to 100 and 125 mm air ducts.

The fan is equipped with a two-speed motor.

The fan with a back valve to prevent back air flow during the fan standby.

MODIFICATIONS:



V: the fan is equipped with a built-in pull cord switch.

The operating logic is shown in Fig. 13-15.



T: the fan is equipped with a turn-off delay timer and an interval timer.

The operating logic is shown in Fig. 17.



TH: the fan is equipped with a turn-off delay timer and a humidity sensor.

The operating logic is shown in Fig. 18.

OPERATION GUIDELINES

The fan is rated for connection to AC single-phase 220...240 V / 50 Hz.

The fan is rated for operation at the ambient air temperature from +1 °C up to +45 °C.

Ingress protection rating against access to hazardous parts and water ingress is IP 45.

The fan requires no grounding.

MOUNTING

The fan is designed for vertical or horizontal installation and connection to a ventilation shaft or a round air duct of a matching diameter, Fig. 2.

Attention!

In case of vertical mounting the fan must be protected against ingress of rainfalls and condensate inside the fan, Fig. 2.

Fan installation with direct air discharge upwards is not allowed, Fig. 3.

Fan mounting steps are shown in Fig. 4-12.

Wiring options are shown in Fig. 13-18.

Adjustment of the turn-off delay timer, interval timer of humidity sensor settings is shown in Fig. 19.

OPERATION INDICATION

Basic model and model with a switch:

The light indicator glows orange during the fan operation.

The light indicator is off when the fan is off.

T and TH models:

1. The light indicator blinks green once in 5 seconds the fan operates with minimum speed in standby mode.
2. The light indicator blinks green once in a second the turn-on delay time is activated (60 seconds).
3. The light indicator glows red the humidity sensor is activated and the fan runs with the high speed.
4. The light indicator glows green the switch is ON and the fan runs with the high speed.
5. The light indicator blinks green and red once in 1 second the turn-off delay timer is activated.

WARNING !

If the switch is OFF or the indoor humidity falls below the set point within 60 seconds after activation of the switch or the humidity sensor, the fan continues operation with the low speed.

MAINTENANCE

The fan maintenance periodicity is at least once per 6 months.

Uplift the latches carefully and open the front cover with a flat screwdriver, Fig. 21.

To clean the fan use a soft cloth or a brush wetted in a mild detergent solution, Fig. 22-24.

WARNING!

Avoid water dripping on the electric components.

Wipe the fan surfaces dry after cleaning.

TRANSPORTATION AND STORAGE RULES

Transportation with any transportation vehicle in the manufacturer's original package.

Store the delivered product in the manufacturer's original packing box in a dry ventilated premise with the temperature from +5 °C up to + 40 °C and relative humidity below 80%.

The storage environment must not contain dust, acid or alkali vapours that may cause corrosion of the product parts.



MANUFACTURER'S WARRANTY

The fan is manufactured at the factory of "Ventilation systems" PrJSC (hereinafter referred to as the manufacturer).

We hereby declare that the product complies with the essential protection requirements of Electromagnetic Council Directive 2004/108/EC, 89/336/EEC and Low Voltage Directive 2006/95/EC, 73/23/EEC and CE-marking Directive 93/68/EEC on the approximation of the laws of the Member States relating to electromagnetic compatibility.

This certificate is issued following test carried out on samples of the product referred to above. The manufacturer sets forth the warranty period of the fan as 60 months following the sale date via retail network subject to the customer's ensuring compliance with the rules of transportation, storage, mounting and operation.

Should any malfunctions occur in the course of the fan operation through the Manufacturer's fault during the guaranteed period of operation the user is entitled to elimination of faults by the manufacturer by means of warranty repair at the factory free of charge.

The warranty repair shall include work specific to elimination of faults in the fan operation to ensure its intended use by the user within the guaranteed period of operation.

The faults are eliminated by means of replacement or repair of the fan components or a specific part of such fan component.

The warranty repair does not include:

Routine technical maintenance;

Fan installation / dismantling;

Fan setup.

To benefit from warranty repair the user must provide the fan, the user's manual with the purchase date stamp and the payment document certifying the purchase.

The fan model must comply with the one stated in the user's manual.

Contact the Seller for warranty service.

The manufacturer's warranty does not apply to the following cases:

User's failure to submit the fan with the entire delivery package as stated in the user's manual including submission with missing component parts previously dismounted by the user.

Mismatch of the fan model and the brand name with the information stated on the fan packing and in the user's manual.

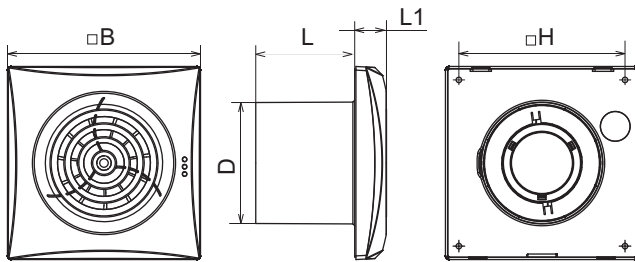
User's failure to ensure timely technical maintenance of the fan.

External damage to the fan casing (excluding external modifications as required for installation) and internal components caused by the user.

Redesign or engineering changes to the fan.
Replacement and use of any assemblies, parts and components not approved by the manufacturer.
Fan misuse.
User's violation of the fan control regulations.
Fan connection to the power mains with a voltage different from the one stated in the user's manual.
Fan breakdown due to voltage surges in the power mains.
Discretionary repair of the fan by the user.
Fan repair by any persons without the manufacturer's authorization.
Expiration of the fan warranty period.
User's violation of the fan transportation regulations.
User's violation of the fan storage regulations.
Wrongful actions against the fan committed by third parties.
Fan breakdown due to circumstances of insuperable force (fire, flood, earthquake, war, hostilities of any kind, blockades).
Missing seals if provided by the user's manual.
Failure to submit the user's manual with the fan purchase date stamp.
Missing payment document certifying the fan purchase.

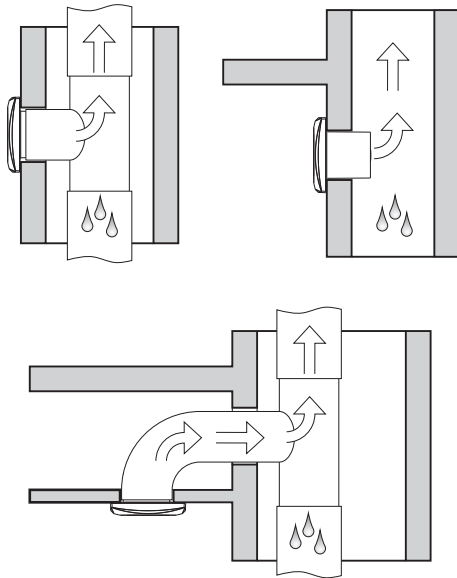
FOLLOWING THE REGULATIONS STIPULATED HEREIN WILL ENSURE A LONG AND TROUBLE-FREE OPERATION OF THE FAN.

USERS' WARRANTY CLAIMS SHALL BE SUBJECT TO REVIEW ONLY UPON PRESENTATION OF THE FAN, THE PAYMENT DOCUMENT AND THE USER'S MANUAL WITH THE PURCHASE DATE STAMP.

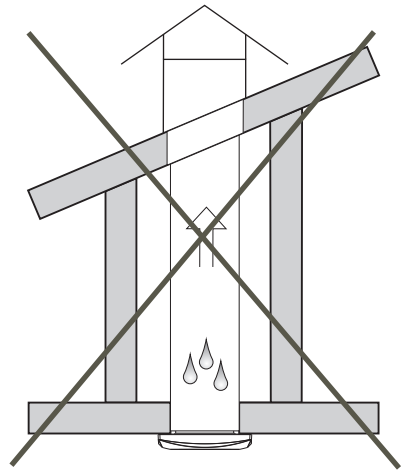


	Quiet 100 Duo	Quiet 125 Duo
D, mm	99	124
B, mm	158	182
H, mm	136	158
L, mm	81	91
L1, mm	26	27

1

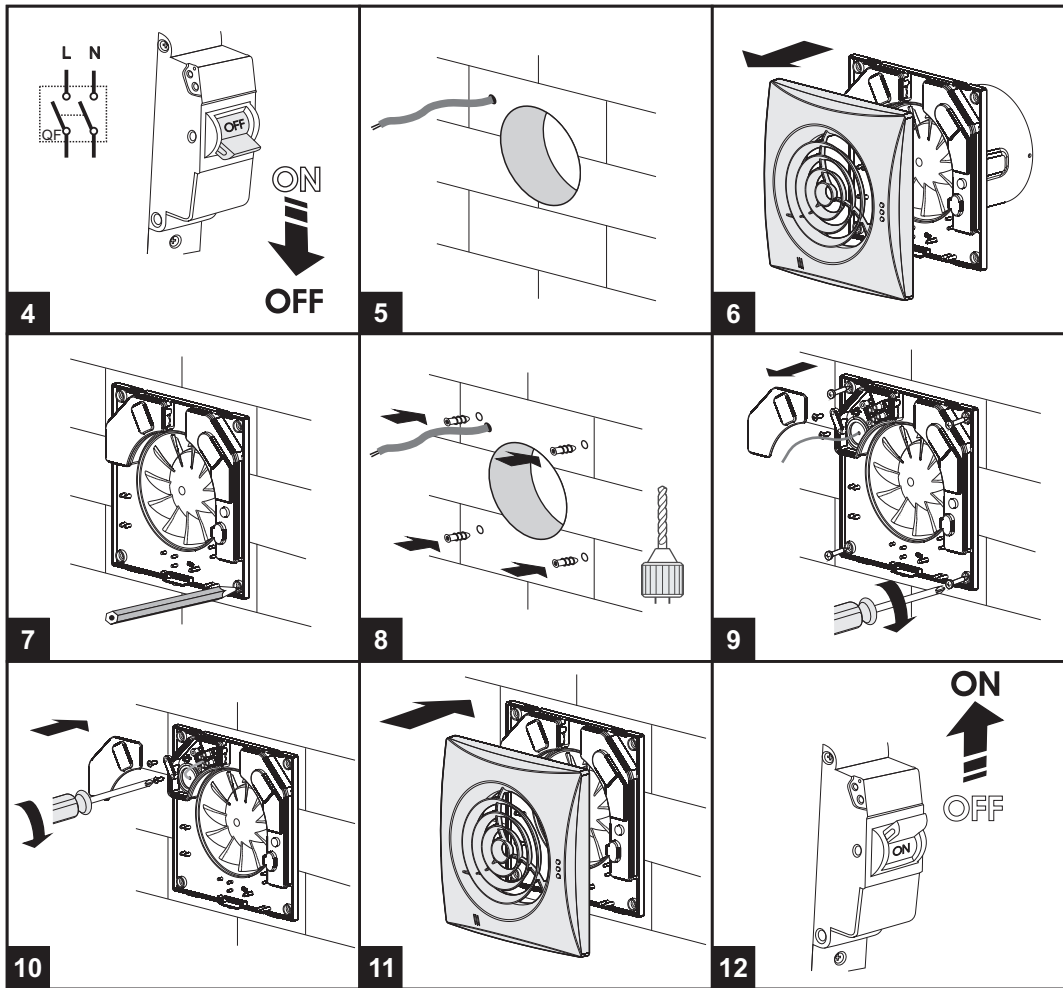


2

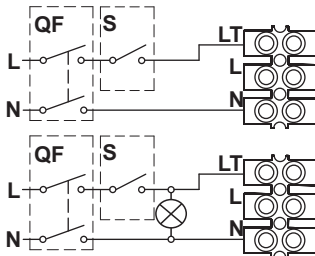


3

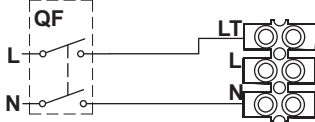




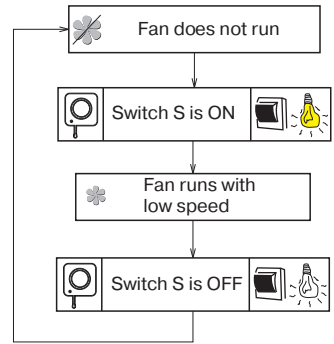
Quiet 100/125 Duo (low speed)



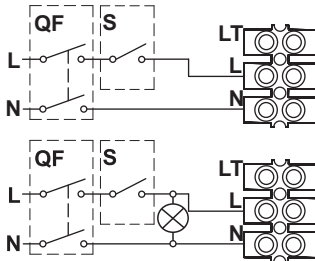
Quiet 100/125 Duo V (low speed)



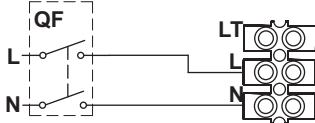
13



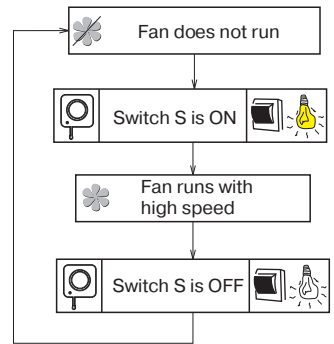
Quiet 100/125 Duo (high speed)



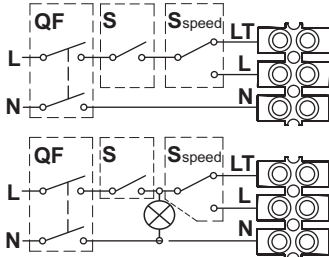
Quiet 100/125 Duo V (high speed)



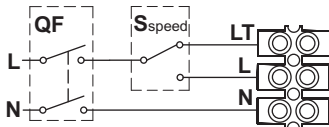
14



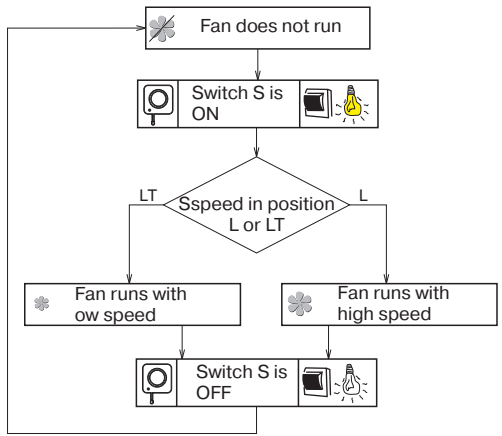
Quiet 100/125 Duo (low and high speed)



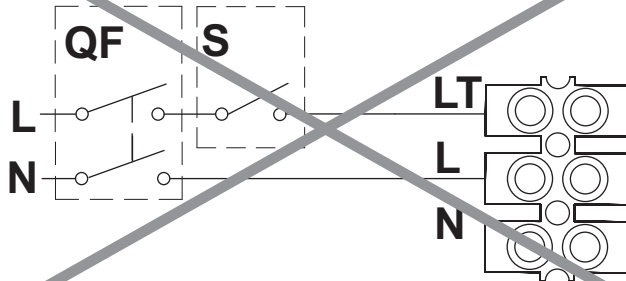
Quiet 100/125 Duo V (low and high speed)



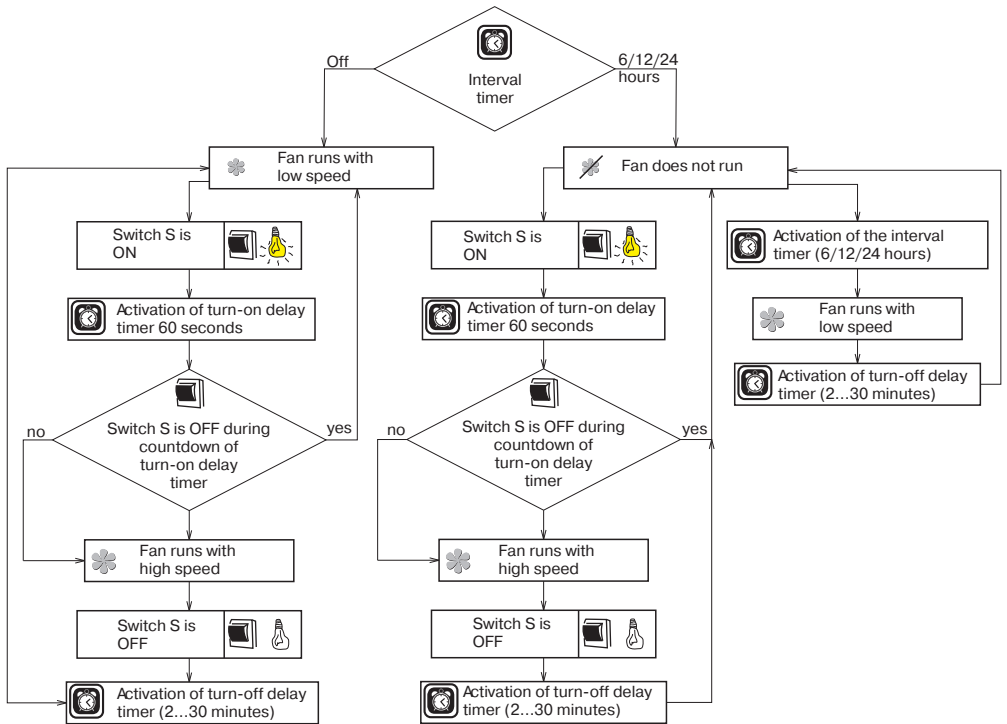
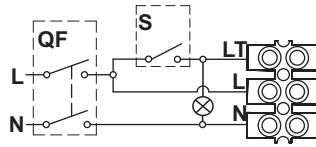
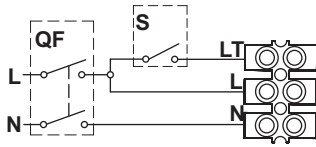
Low speed and high speed

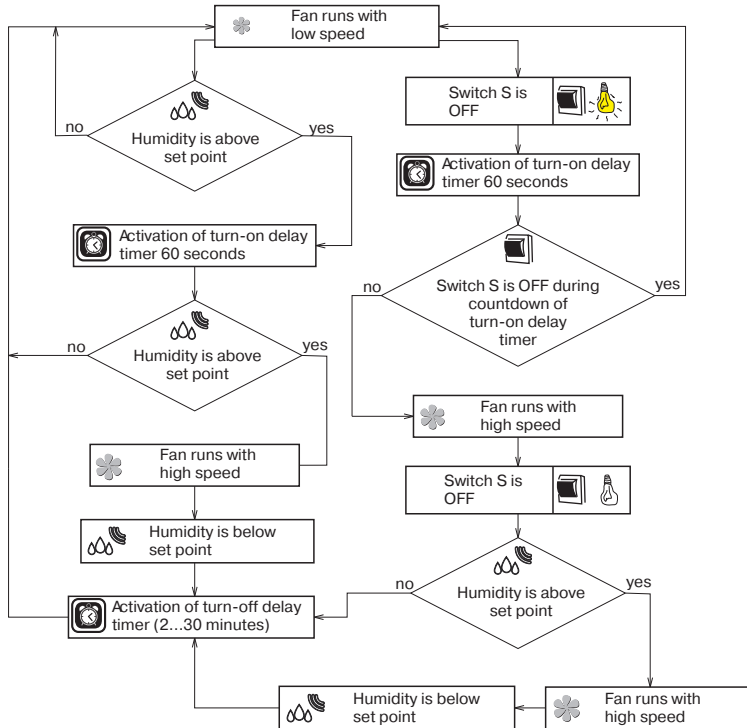
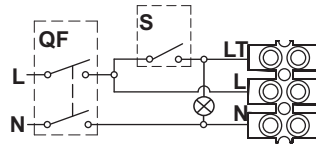
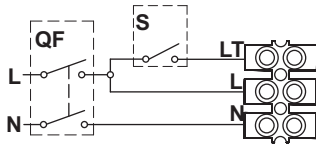


15



16





T_i Turning of the interval timer on and its adjustment is performed with the potentiometer T_i. To turn the interval timer off set the potentiometer T_i into the leftmost position. Rotation of the potentiometer for 1/3 clockwise sets the interval timer operation for 6 hours, rotation of the potentiometer for 2/3 clockwise sets the interval timer operation for 12 hours, rotation of the potentiometer clockwise in the leftmost position sets the interval timer operation for 24 hours.

T_{off} To adjust the fan turn-off delay time, turn the control knob **Toff** clockwise to increase and counter-clockwise to decrease the turn-off delay time respectively, adjustable from 2 up to 30 minutes.

H To adjust the humidity set point turn the control knob **H** clockwise to increase and counter-clockwise to decrease the humidity sensor set point, adjustable from 60% up to 90%.

Warning!

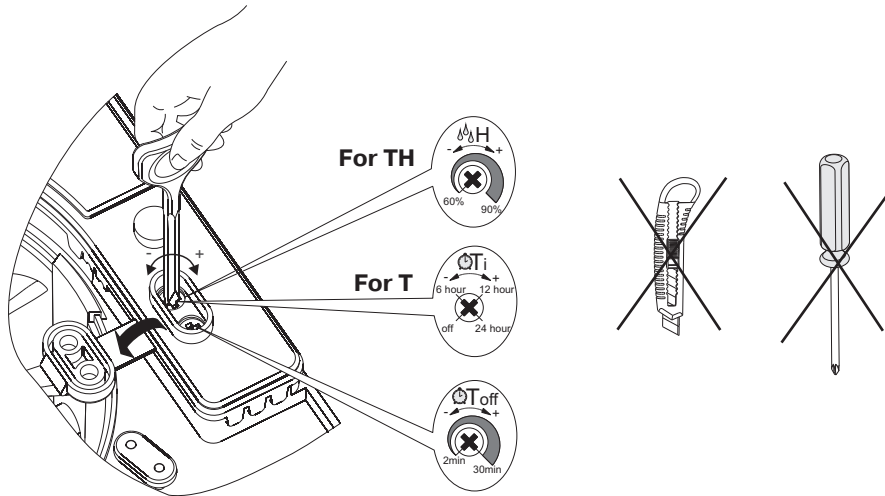
The timer circuit is live!

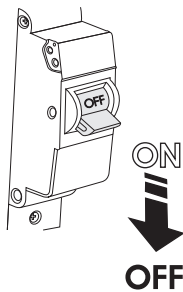
Disconnect the fan from power supply prior to any adjustment operations.

The fan delivery set includes a specially designed plastic screwdriver for fan settings adjustments.

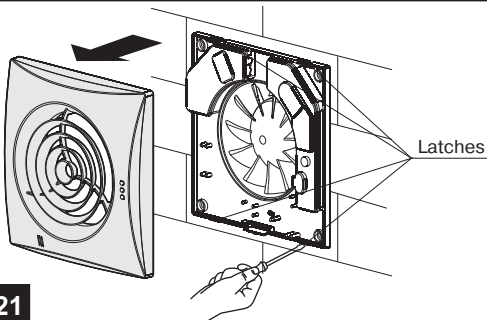
Use it to change the turn-off delay timer, interval timer settings or the humidity sensor set point.

Do not use a metal screwdriver, knife, etc. for adjustment operations not to damage the circuit board.

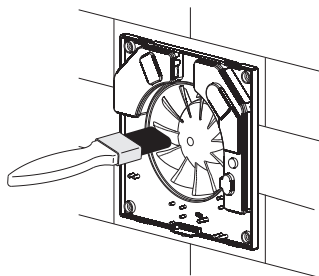




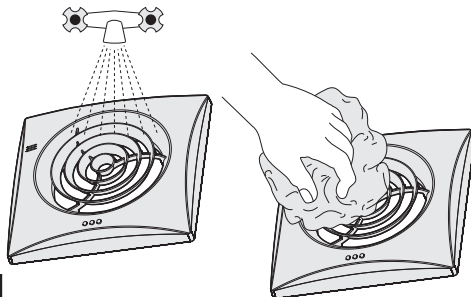
20



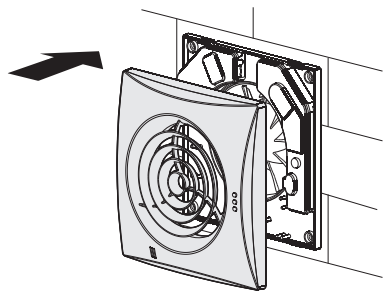
21



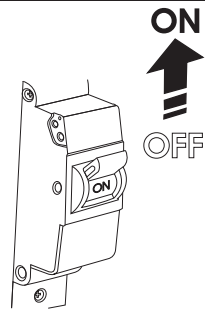
22



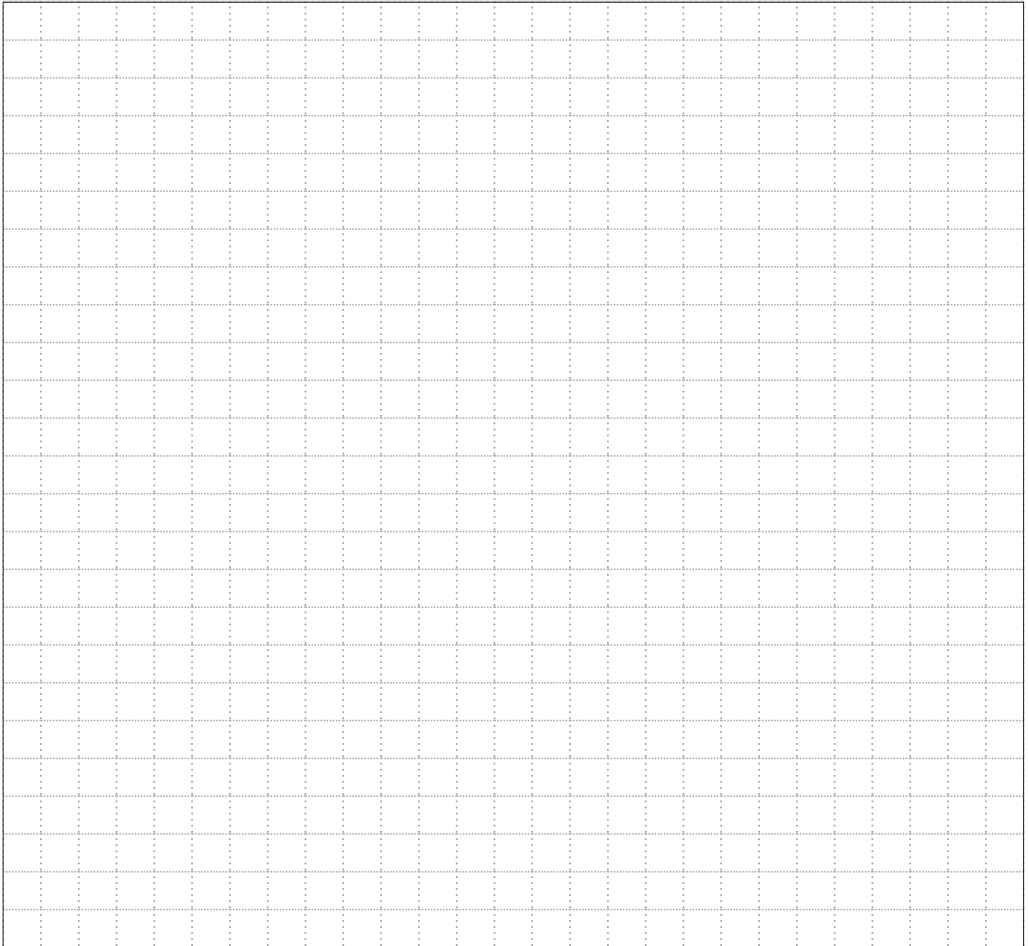
23



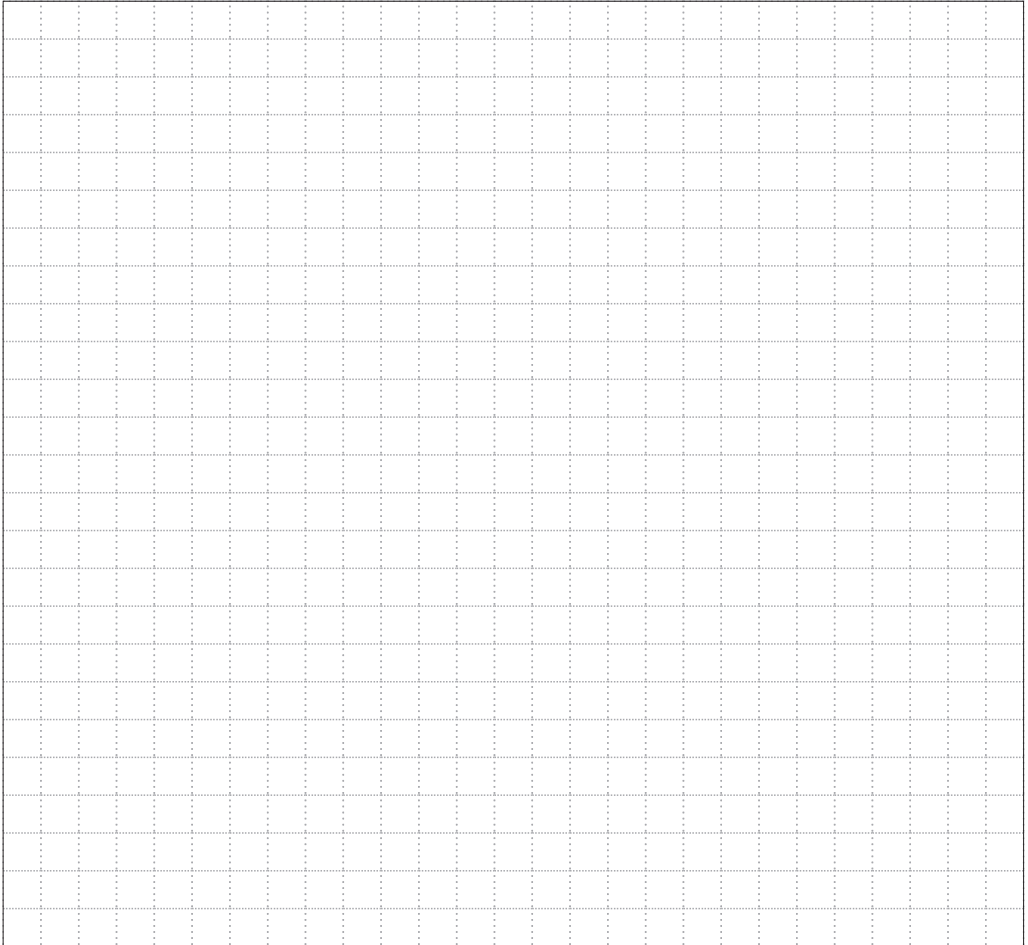
24



25



notes



Acceptance certificate

The fan is recognized as serviceable.

Quiet 100 Duo V
125 T
TH

Approval mark

Manufacturing date

Sold

(name and stamp of the seller)

Sales date